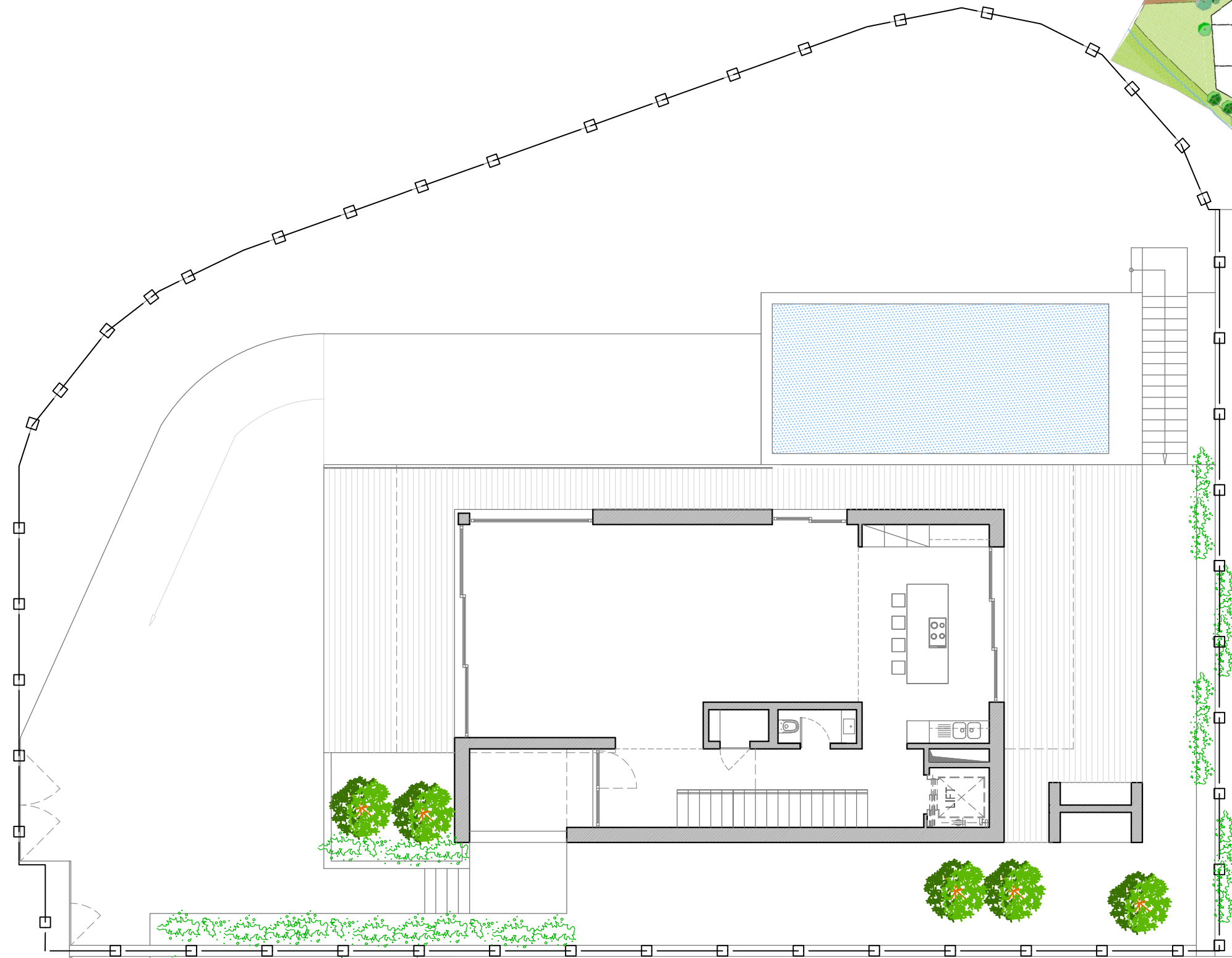


# Plot 8 + Villa Implantation

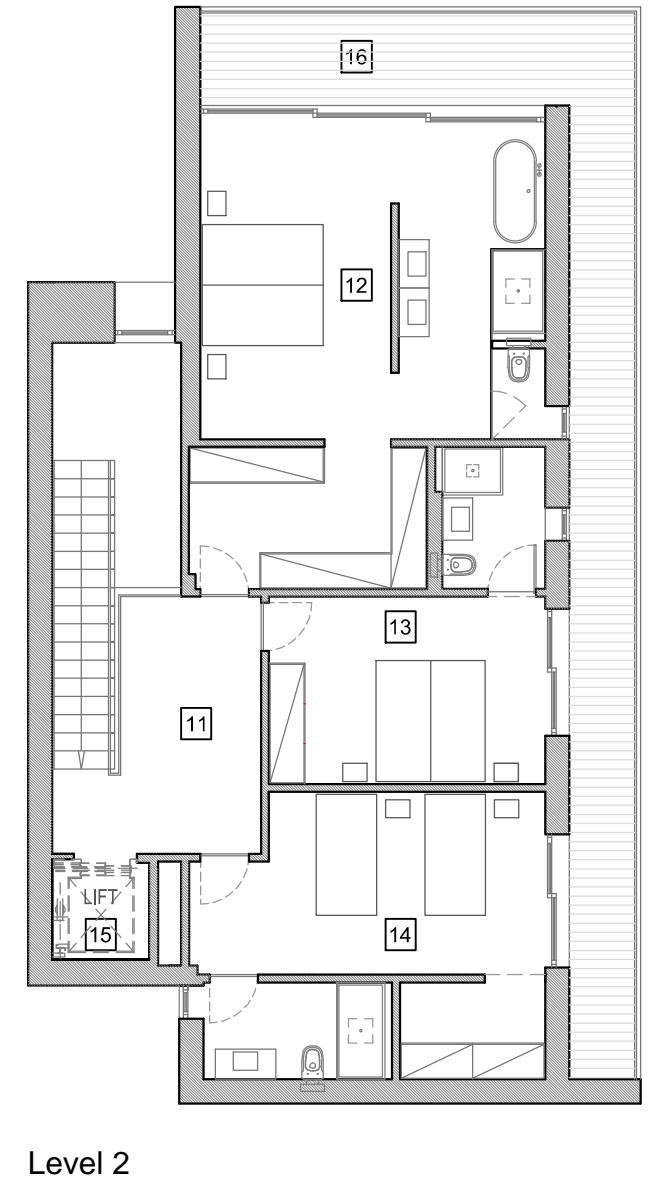
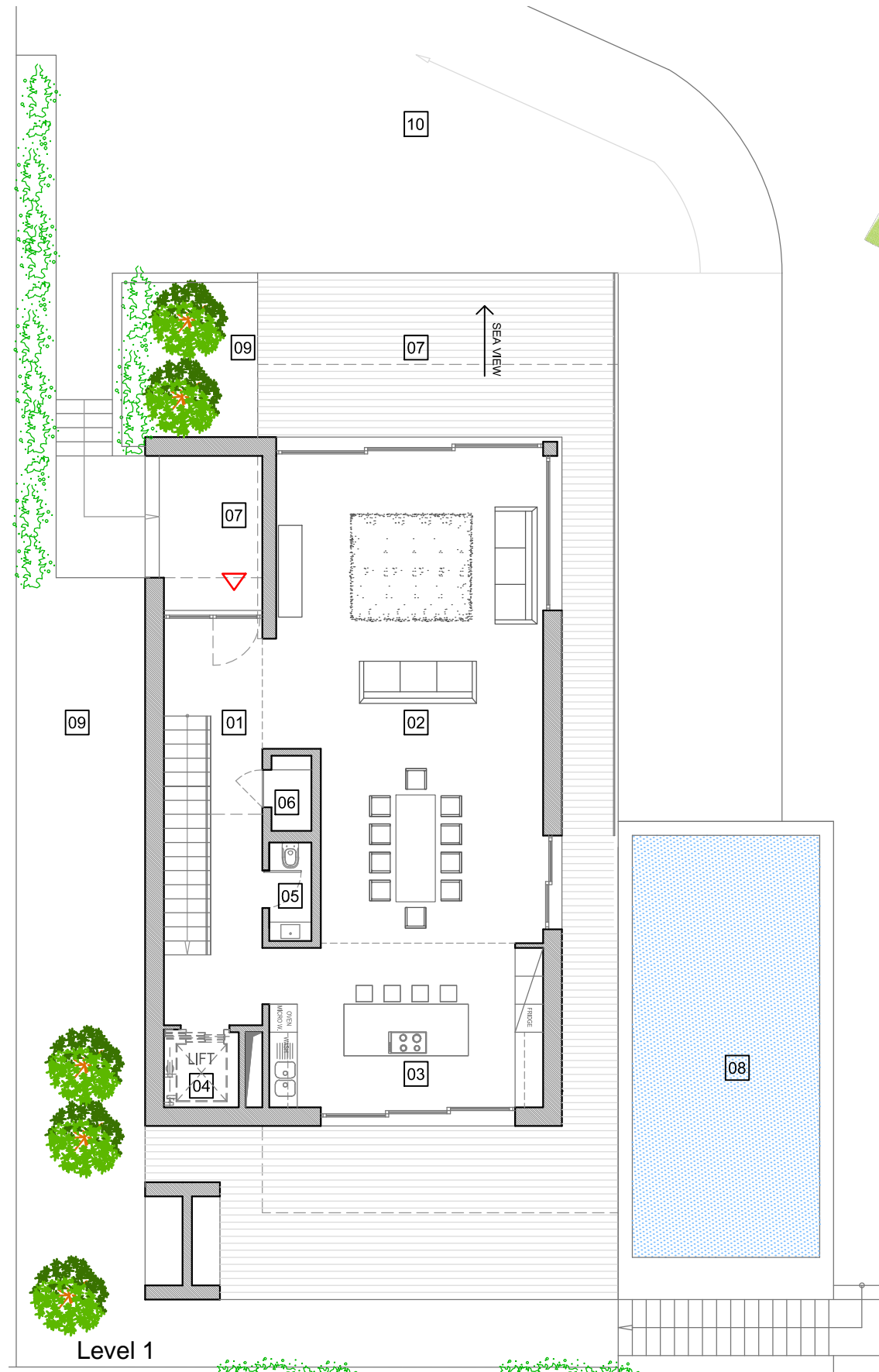
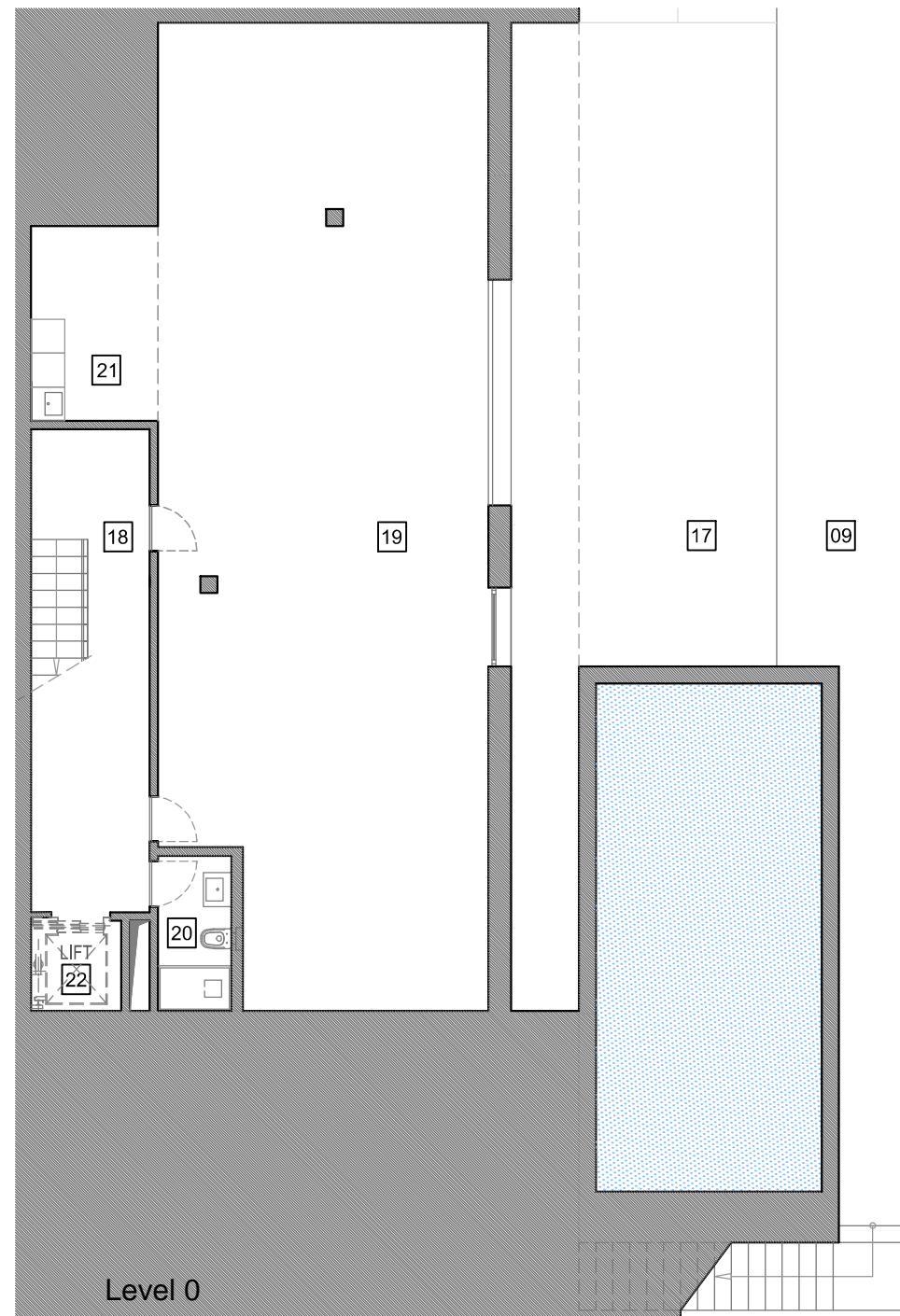


**Heights 3**  
PERALTA

Summary (all levels)		
Plot Area	□—□—□—□	674.1 m <sup>2</sup>
Covered Area (council area)	.....	250.0 m <sup>2</sup>
Covered Area (all levels)	.....	305.0 m <sup>2</sup>
All Terraces, Patio & Pool	.....	214.7 m <sup>2</sup>
Gross Built Area	.....	514.7 m <sup>2</sup>
Garden	.....	252.1 m <sup>2</sup>

Measurements are approximate

# Villa 8



1m 5m

## Heights 3 PERALTA

01	Entrance Hall	18.0 m2	08	Pool	36.0 m2	15	LIFT
02	Living Room	56.0 m2	09	Gardens	252.1 m2	16	Terrace
03	Kitchen	20.4 m2	10	Circulation	100.9 m2	17	Patio
04	LIFT		11	Hall	11.9 m2	18	Circulation
05	Bathroom	1.9 m2	12	Master Suite	39.6 m2	19	Garage
06	Closet	1.4 m2	13	Suite	18.4 m2	20	Bathroom
07	Terraces	92.3 m2	14	Suite	26.5 m2	21	Laundry
						22	LIFT

Summary (all levels)	
Plot Area	674.1 m2
Covered Area (council area)	250.0 m2
Covered Area (all levels)	305.0 m2
All Terraces, Patio & Pool	214.7 m2
Gross Built Area	514.7 m2
Garden	252.1 m2

Measurements are approximate