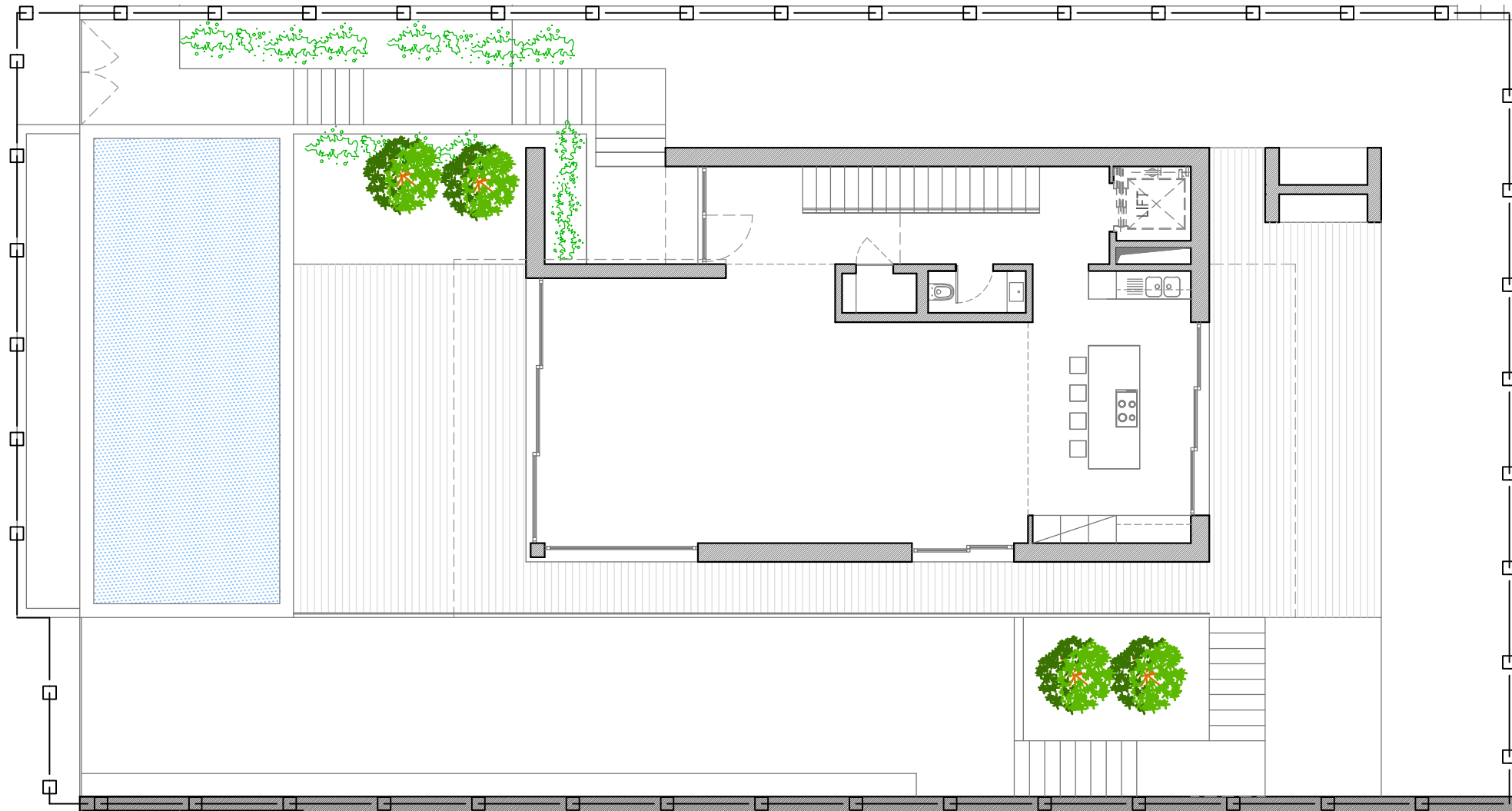


Plot 7 + Villa Implantation



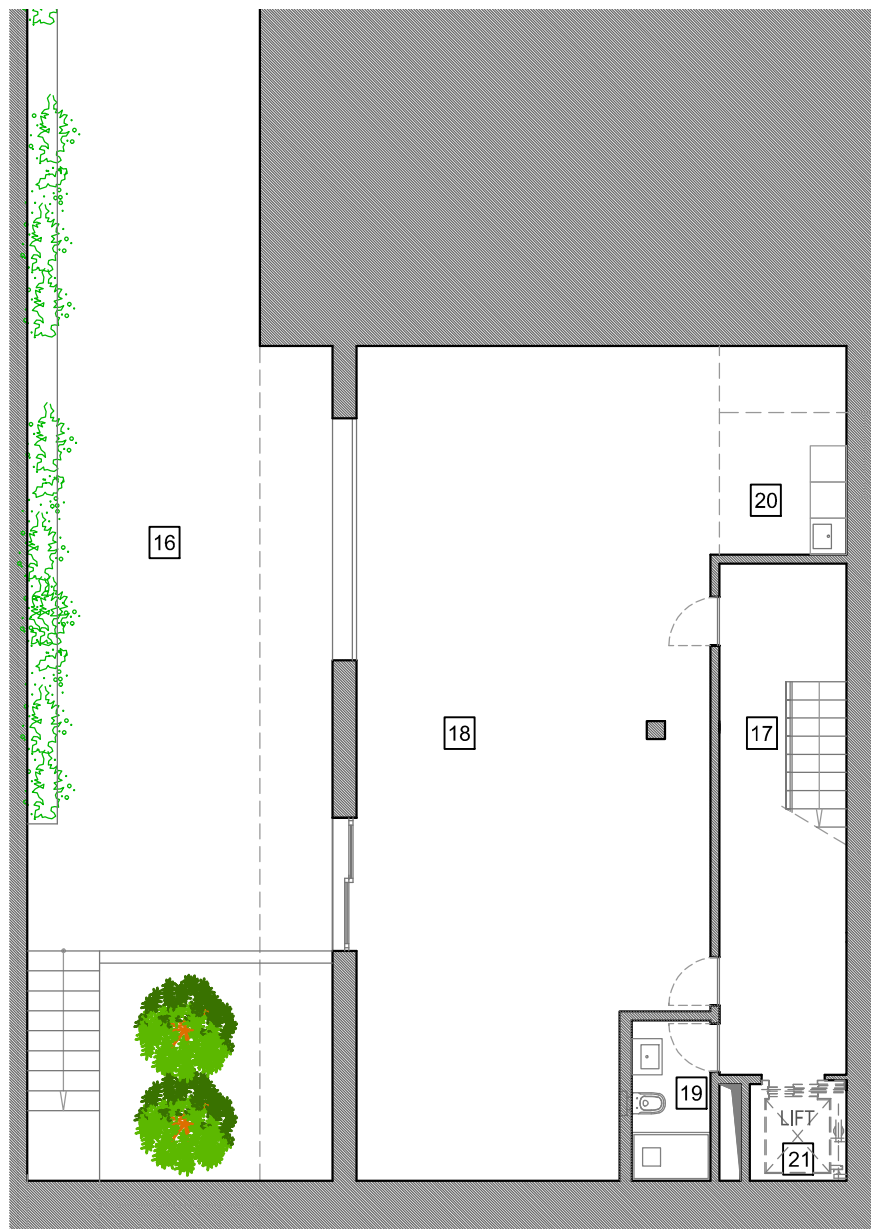
Plot

Heights 3 PERALTA

Summary (all levels)		
Plot Area	□—□—□—□	543.0 m ²
Covered Area (council area)	250.0 m ²
Covered Area (all levels)	285.0 m ²
All Terraces, Patio & Pool	257.4 m ²
Gross Built Area	542.4 m ²
Garden	164.8 m ²

Measurements are approximate

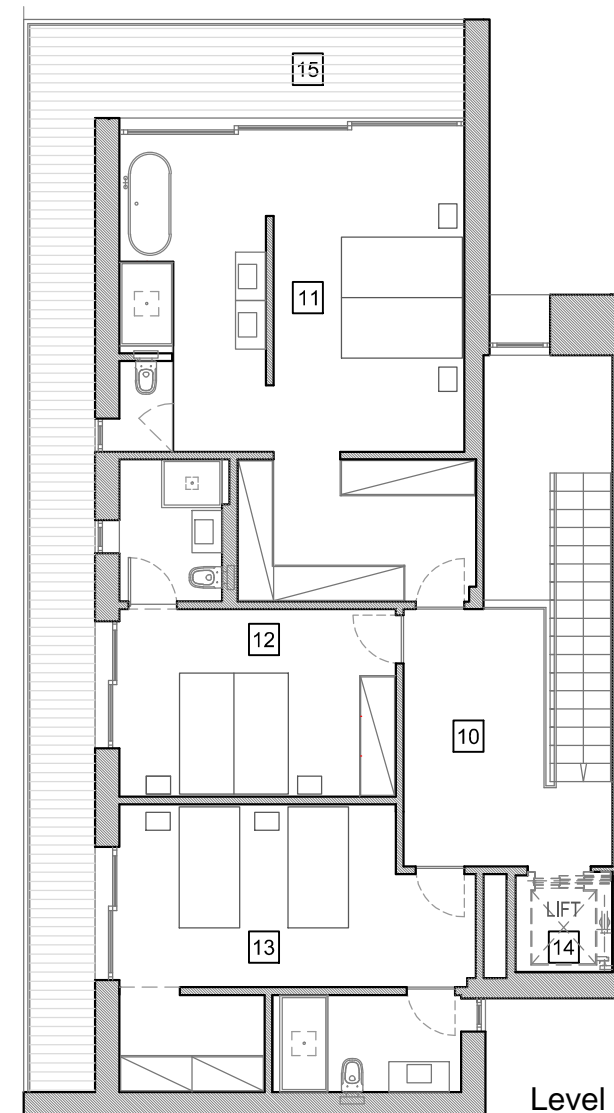
Villa 7



Level 0



Level 1



Level 2

Heights 3
PERALTA

01	Entrance Hall	18.0 m2	08	Pool	40.0 m2	15	Terrace	32.8 m2
02	Living Room	56.0 m2	09	Gardens	164.8 m2	16	Courtyard	89.9 m2
03	Kitchen	20.4 m2	10	Hall	11.9 m2	17	Circulation	12.8 m2
04	LIFT		11	Master Suite	39.6 m2	18	Garage	77.0 m2
05	Bathroom	1.90 m2	12	Suite	18.4 m2	19	Bathroom	3.9 m2
06	Closet	1.40 m2	13	Suite	26.0 m2	20	Laundry	7.7 m2
07	Terraces	94,7 m2	14	LIFT		21	LIFT	

Summary (all levels)	
Plot Area	543.0 m2
Covered Area (council area)	250.0 m2
Covered Area (all levels)	285.0 m2
All Terraces, Patio & Pool	257.4 m2
Gross Built Area	542.4 m2
Garden	164.8 m2