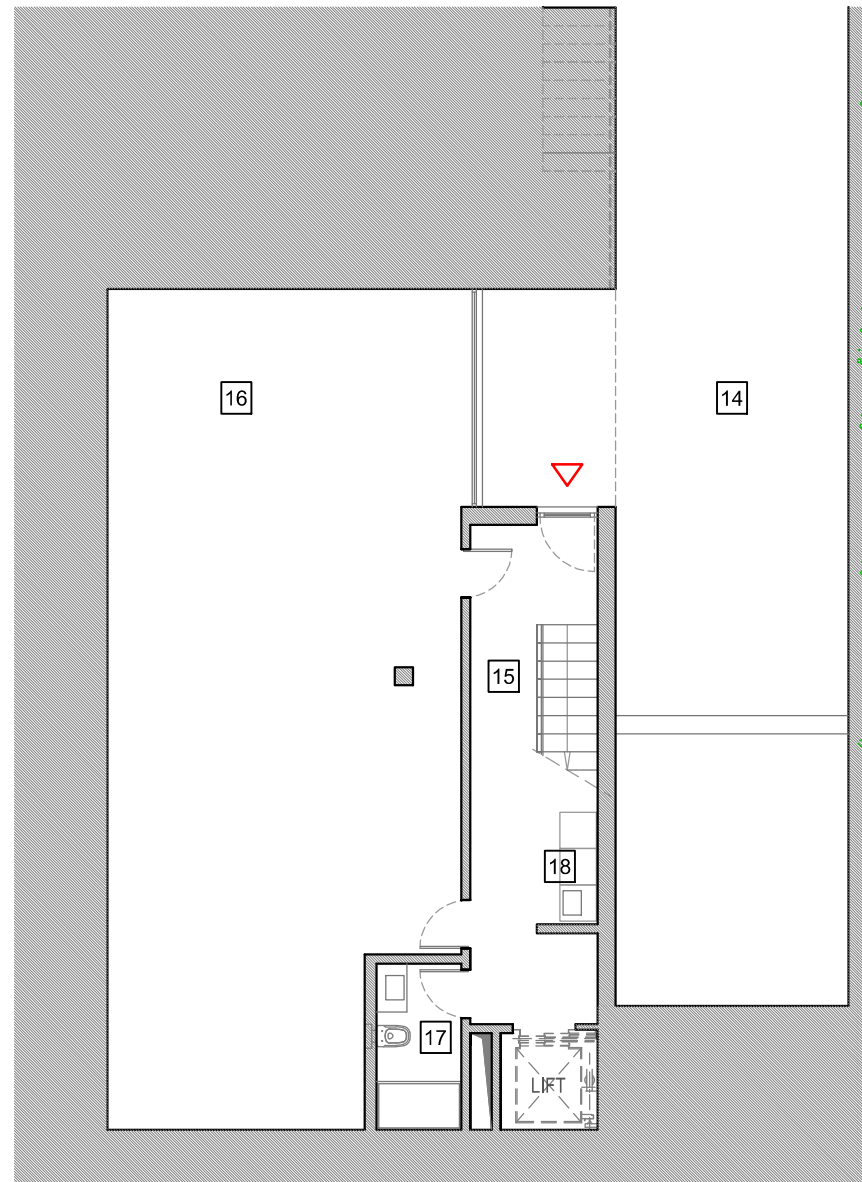
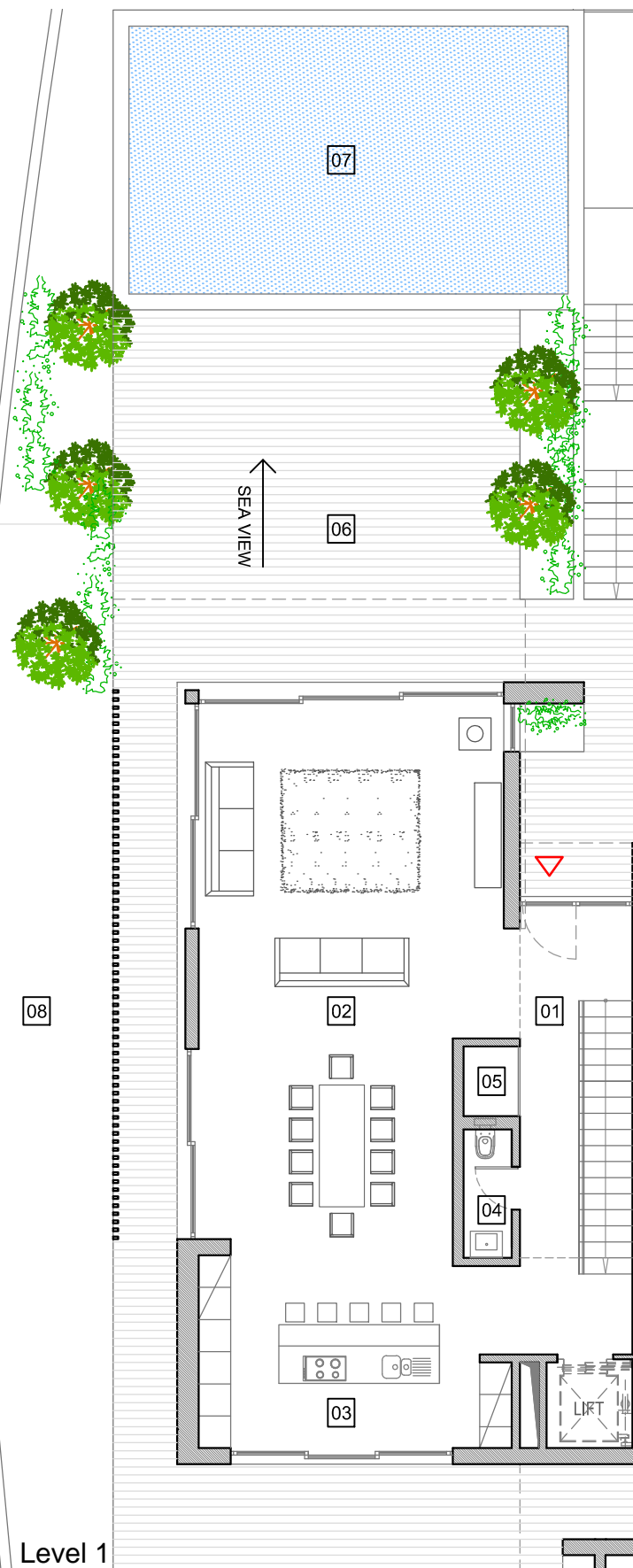


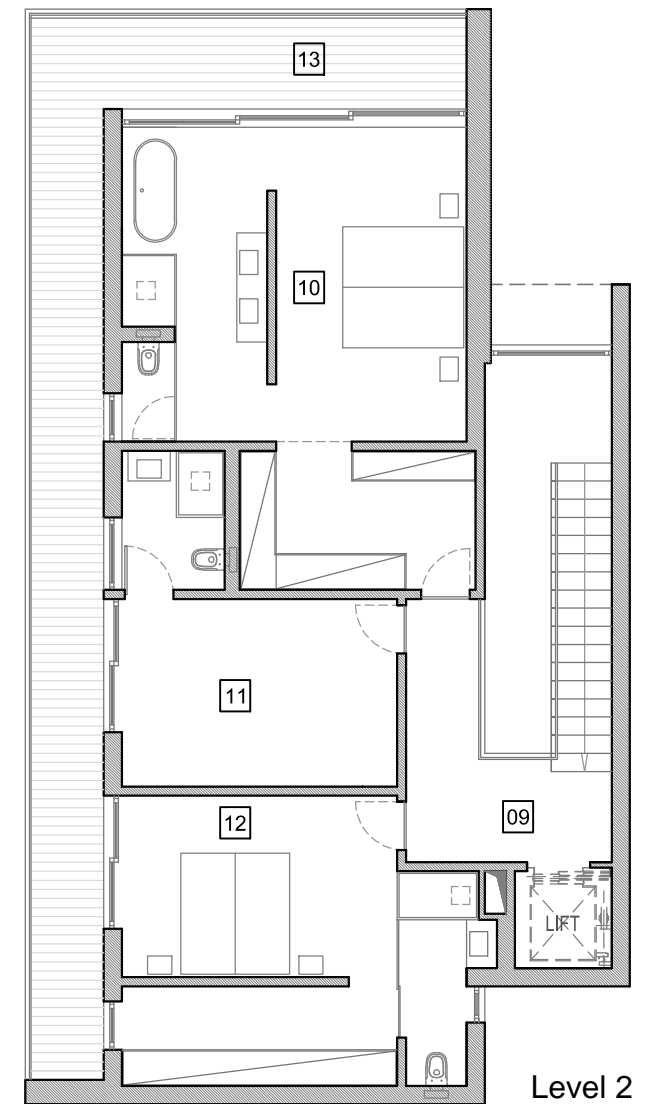
Villa 1



Level 0



Level 1



Level 2

Heights 3 PERALTA

01	Entrance Hall	17.3 m2	07	Pool	40.0 m2	13	Terrace	32.8 m2
02	Living Room	55.4 m2	08	Gardens	301.3 m2	14	Courtyard	89.4 m2
03	Kitchen	21.0 m2	09	Circulation	9.1 m2	15	Circulation	11.9 m2
04	Bathroom	2.15 m2	10	Master Suite	39.2 m2	16	Garage	76.7 m2
05	Closet	1.35 m2	11	Office	18.0 m2	17	Bathroom	3.9 m2
06	Terraces	94,9 m2	12	Suite	26.5 m2	18	Laundry	2.5 m2

Summary (all levels)	
Plot Area	703.8 m2
Covered Area (council area)	250.0 m2
Covered Area (all levels)	285.0 m2
All Terraces, Patio & Pool	278.2 m2
Gross Built Area	563.2 m2
Garden	301.3 m2