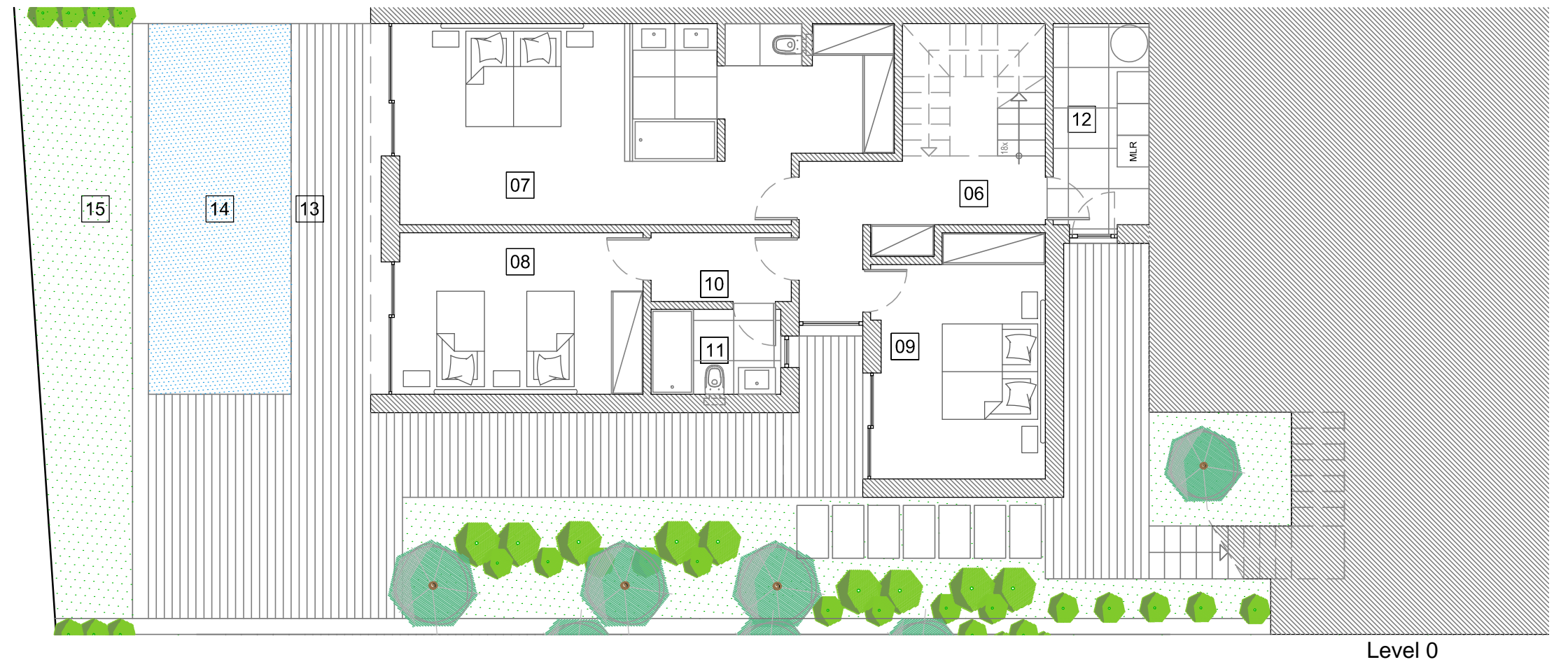
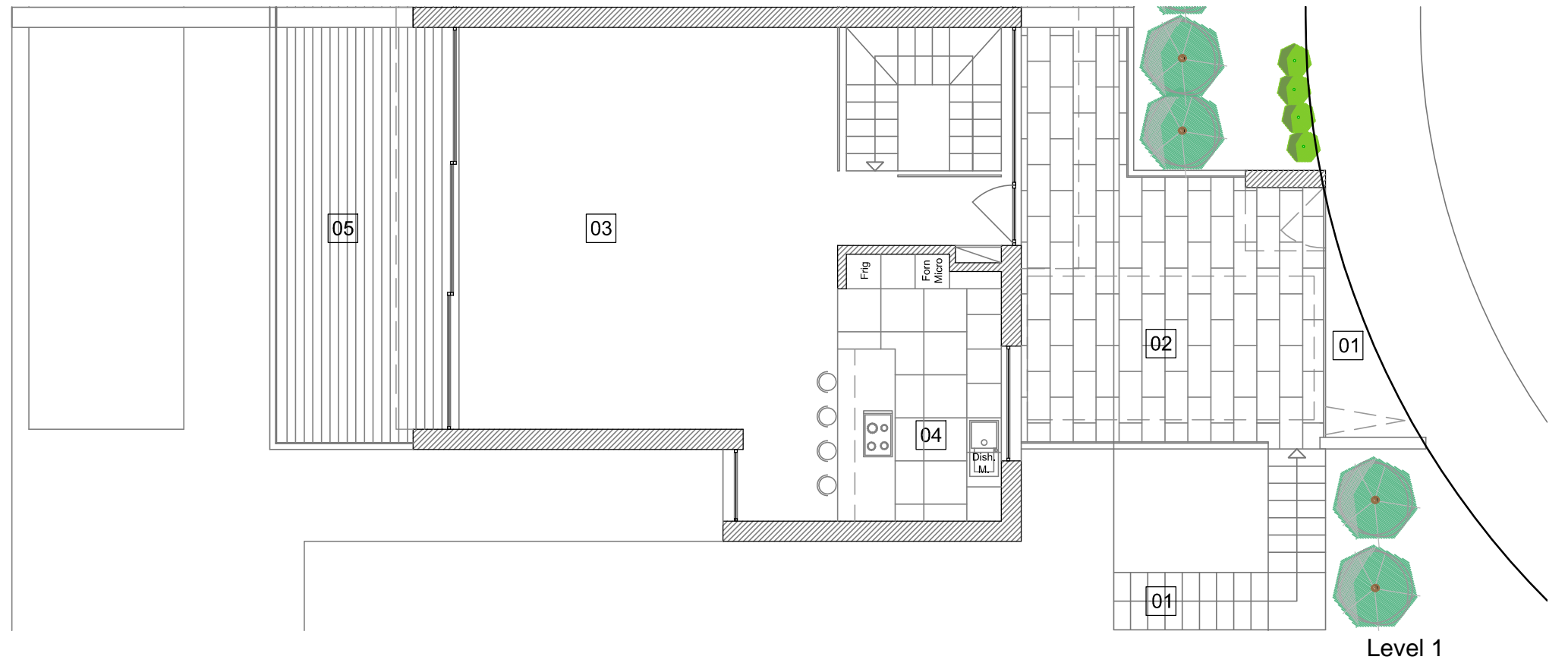


**Unit G - Floor Plans**



**Heights 3**  
PERALTA

01	Entrance + Exterior Covering	10.40 m2	06	Hall	18.05 m2	11	Bathroom	3.90 m2
02	Parking Terrace	30.20 m2	07	Master Suite	32.90 m2	12	Laundry	4.25 m2
03	Living Room	50.25 m2	08	Convertible bedroom	14.00 m2	13	Terraces	60.40 m2
04	Kitchen	15.80 m2	09	Bedroom / Office	13.90 m2	14	Pool	20.00 m2
05	Terrace	22.60 m2	10	Circulation	3.45 m2	15	Garden	61.80 m2

**Summary** (all levels)

Plot Area	.....	294.30 m2
Covered Area (all levels)	.....	189.10 m2
Entrance Terraces & Pool	.....	143.60 m2
Gross Built Area	.....	332.70 m2
Garden	.....	61.80 m2

Measurements are approximate