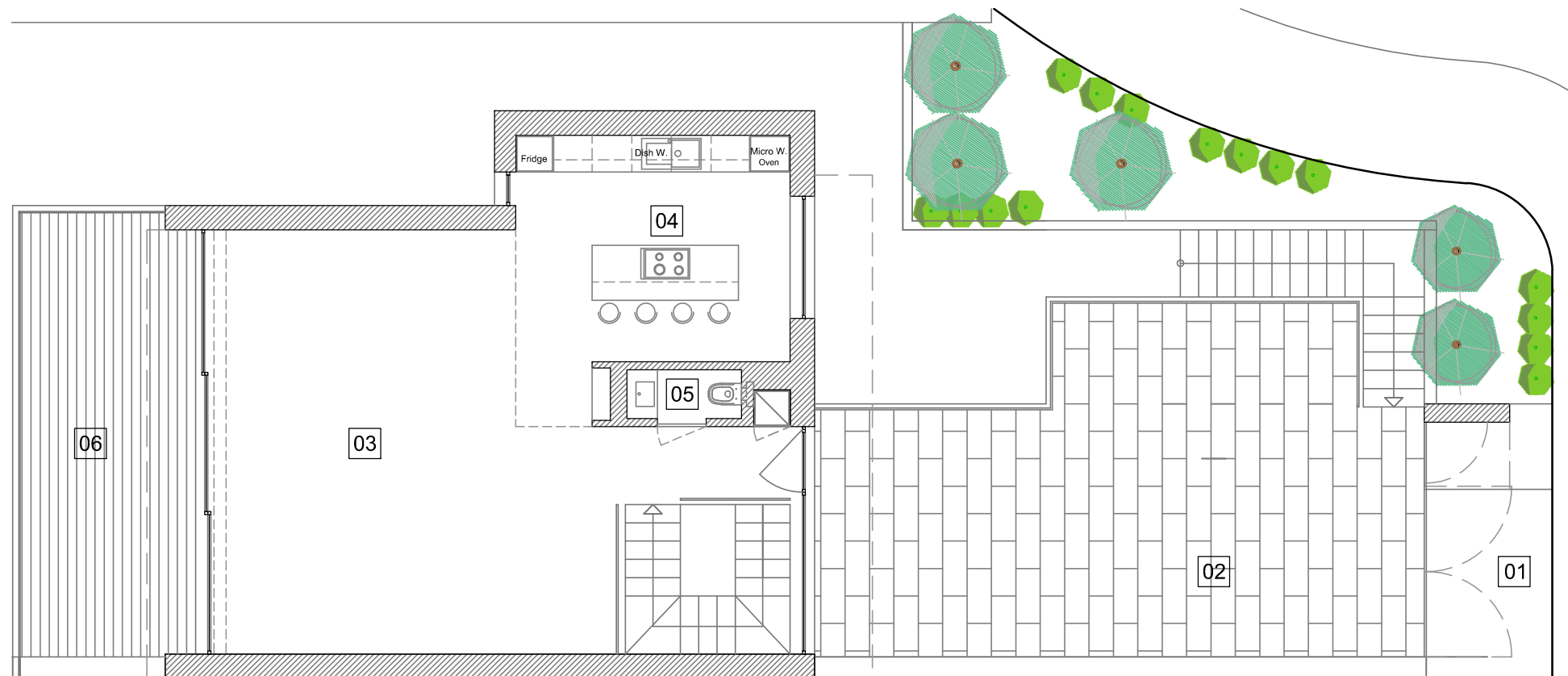
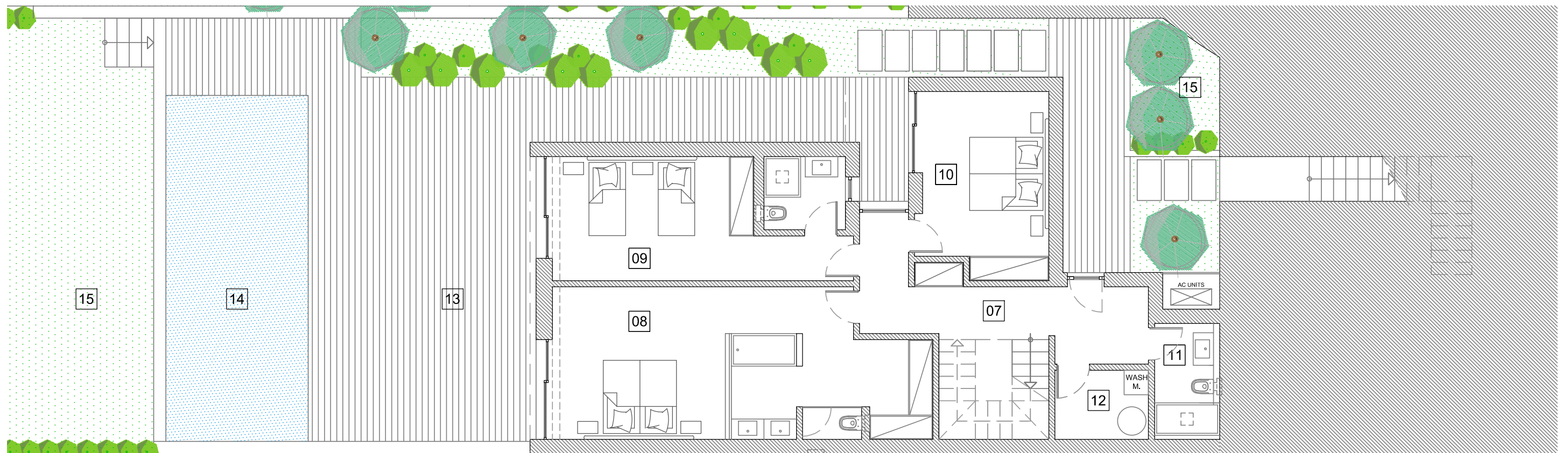


**Unit F - Floor Plans**



Level 1



Level 0

**Heights 3**  
PERALTA

01	Entrance + Exterior Covering	18.30 m2	06	Terrace	22.60 m2	11	Bathroom	4.60 m2
02	Parking Terrace	50.80 m2	07	Hall	19.70 m2	12	Laundry	3.90 m2
03	Living Room	50.25 m2	08	Master Suite	32.90 m2	13	Terraces	87.40 m2
04	Kitchen	15.80 m2	09	Suite	22.20 m2	14	Pool	30.00 m2
05	Bathroom	1.50 m2	10	Bedroom	13.90 m2	14	Garden	72.20 m2

**Summary** (all levels)

Plot Area	.....	372.10 m2
Covered Area (all levels)	.....	198.80 m2
Entrance, Terraces & Pool	.....	209.10 m2
Gross Built Area	.....	407.90 m2
Garden	.....	72.20 m2

Measurements are approximate