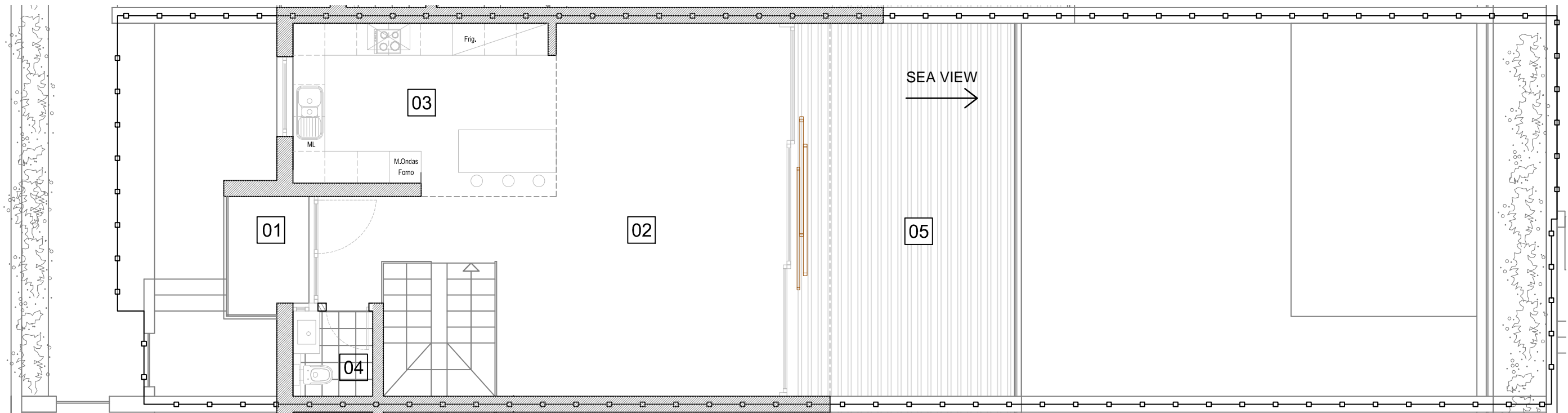


Phase 2 : Villa 4F



Level 2

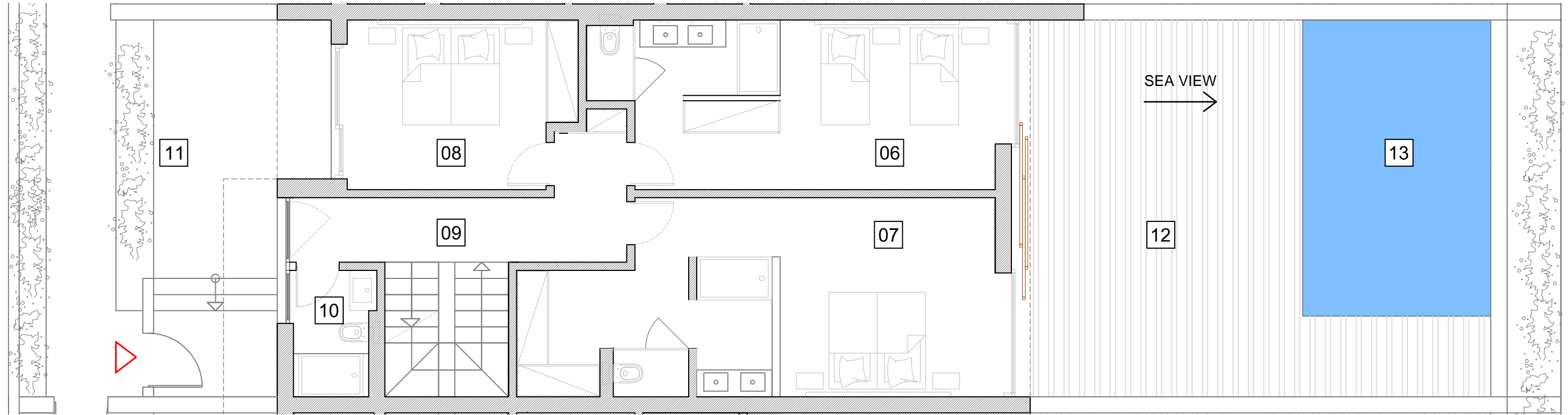
heights II
PERALTA

01	Balcony	4 m2	07	Bedroom	30.3 m2	13	Pool	19.2 m2
02	Living Room	40.5 m2	08	Bedroom	12.8 m2	14	Hall	22.1 m2
03	Kitchen	15.3 m2	09	Hall	9.4 m2	16	Garage	56.5 m2
04	Restroom	2.4 m2	10	Bathroom	3.5 m2	15	Laundry	5 m2
05	Terrace	34.45 m2	11	Terrace	23.95 m2			
06	Bedroom	23 m2	12	Terrace	43.3 m2			

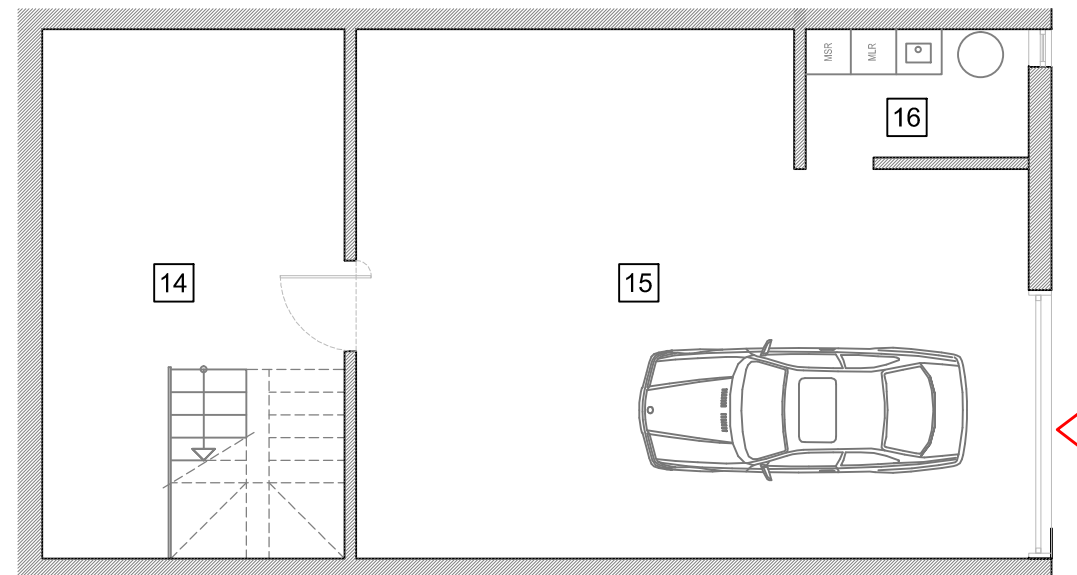
Summary
(all levels)

Plot Area	190 m ²
Covered Area (council area)	152.3 m ²
Covered Area (all levels)	251.9 m ²
All Terraces & Pool	100.95 m ²
Gross Area	352.85 m ²

Phase 2 : Villa 4F



Level 1



Level 0

heights II
PERALTA

01	Balcony	4 m2	07	Bedroom	30.3 m2	13	Pool	19.2 m2
02	Living Room	40.5 m2	08	Bedroom	12.8 m2	14	Hall	22.1 m2
03	Kitchen	15.3 m2	09	Hall	9.4 m2	16	Garage	56.5 m2
04	Restroom	2.4 m2	10	Bathroom	3.5 m2	15	Laundry	5 m2
05	Terrace	34.45 m2	11	Terrace	23.95 m2			
06	Bedroom	23 m2	12	Terrace	43.3 m2			

Summary
(all levels)

Plot Area	190 m ²
Covered Area (council area)	152.3 m ²
Covered Area (all levels)	251.9 m ²
All Terraces & Pool	100.95 m ²
Gross Area	352.85 m ²