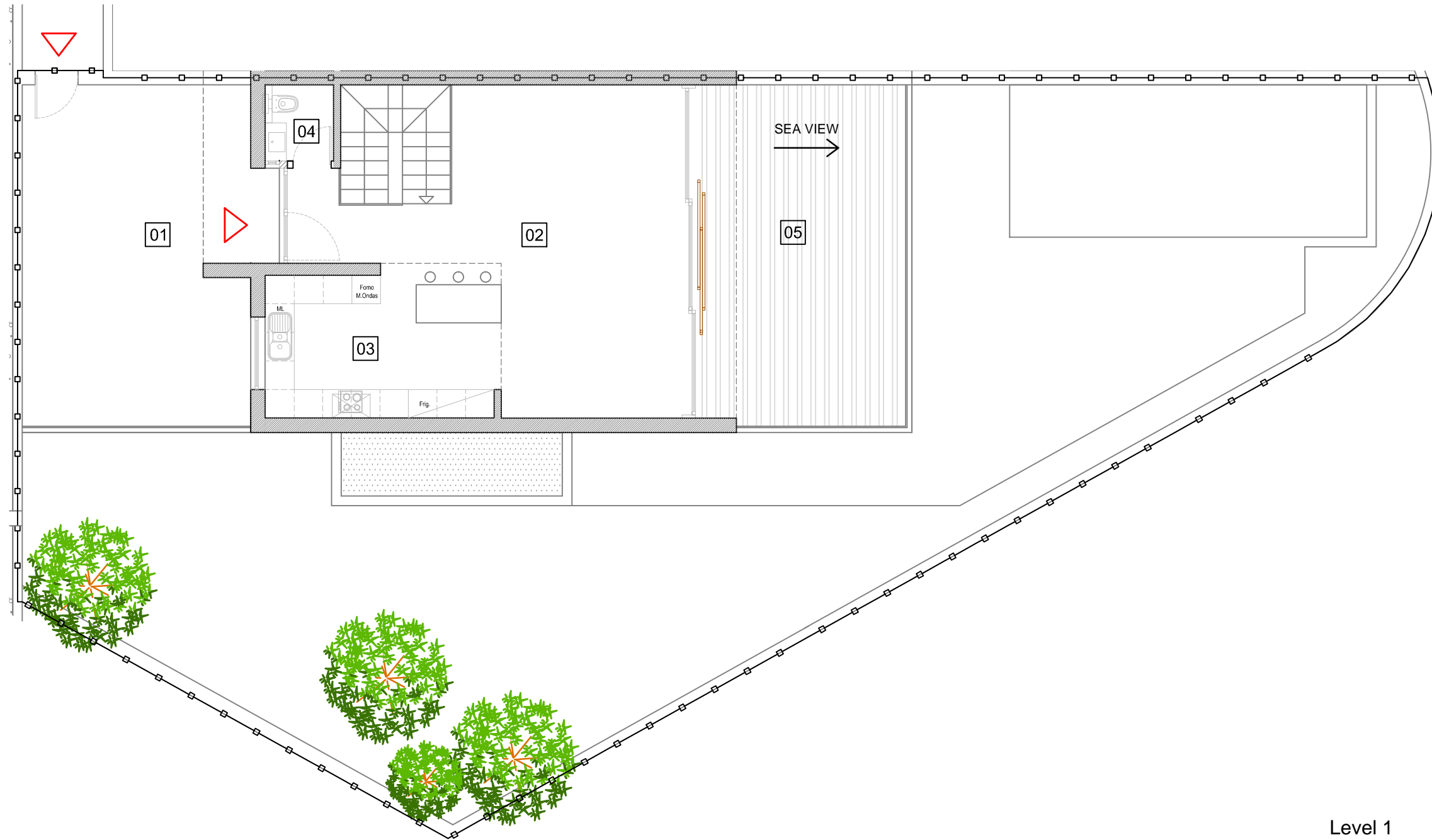


Phase 2 : Villa 4B



Level 1

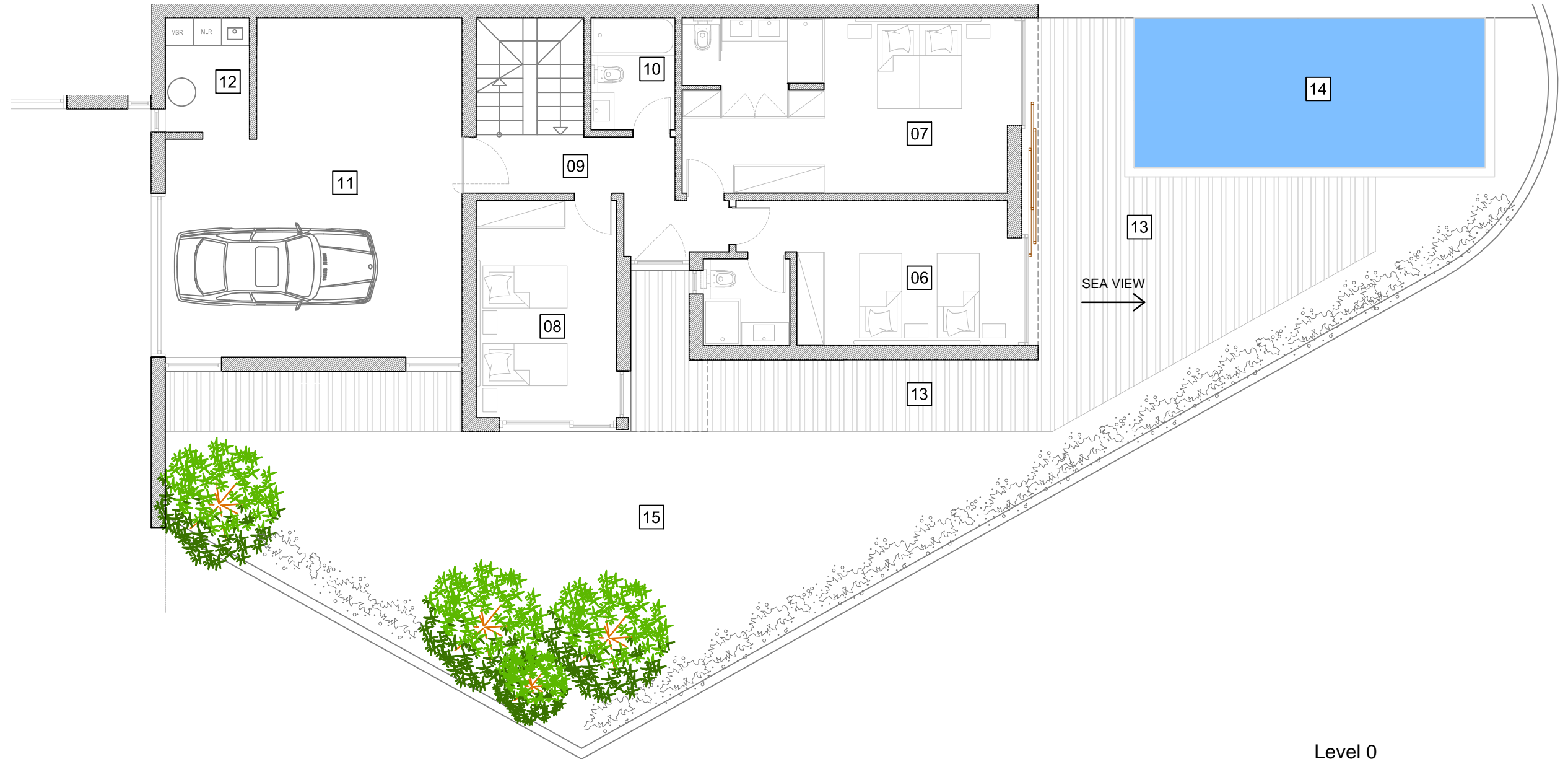
heights II
PERALTA

01	Entrance Terrace	41.35 m ²	07	Bedroom	26.4 m ²	13	Terrace	59.8 m ²
02	Living Room	40 m ²	08	Bedroom	14 m ²	14	Pool	24 m ²
03	Kitchen	13.5 m ²	09	Hall	8.15 m ²	15	Garden	101.45 m ²
04	Restroom	2.3 m ²	10	Bathroom	4.3 m ²			
05	Terrace	33.50 m ²	11	Garage	42.9 m ²			
06	Bedroom	19.8 m ²	12	Laundry	1.4 m ²			

Summary
(all levels)

Plot Area	333 m ²
Covered Area (council area)	145.9 m ²
Covered Area (all levels)	195.4 m ²
All Terraces & Pool	158.65 m ²
Gross Area	354.05 m ²

Phase 2 : Villa 4B



Level 0

heights II PERALTA

01	Entrance Terrace	41.35 m ²	07	Bedroom	26.4 m ²	13	Terrace	59.8 m ²
02	Living Room	40 m ²	08	Bedroom	14 m ²	14	Pool	24 m ²
03	Kitchen	13.5 m ²	09	Hall	8.15 m ²	15	Garden	101.45 m ²
04	Restroom	2.3 m ²	10	Bathroom	4.3 m ²			
05	Terrace	33.50 m ²	11	Garage	42.9 m ²			
06	Bedroom	19.8 m ²	12	Laundry	1.4 m ²			

Summary (all levels)	
Plot Area	333 m ²
Covered Area (council area)	145.9 m ²
Covered Area (all levels)	195.4 m ²
All Terraces & Pool	158.65 m ²
Gross Area	354.05 m ²